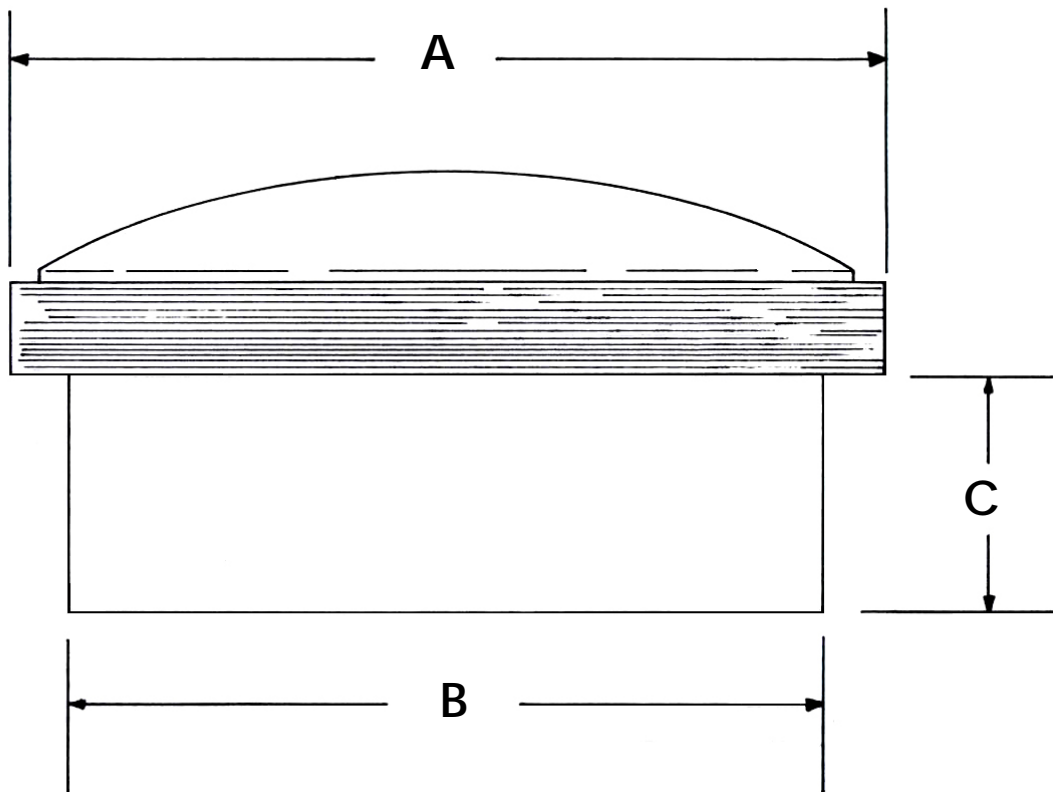


Insert Specification Diagram

A – The overall diameter of the visible portion of the clock insert (to include the bezel, or brass ring).

B – Indicates insert mounting diameter. This dimension shows the required diameter of counter-bore that the insert housing will fit into.

C – Indicates mounting depth. This dimension is measured from the backside of the bezel (brass rim) to the back of the insert housing. It will depict how deep a counter-bored insert mount hole should be.



Note: The above drawing depicts a generalized illustration of a typical insert.